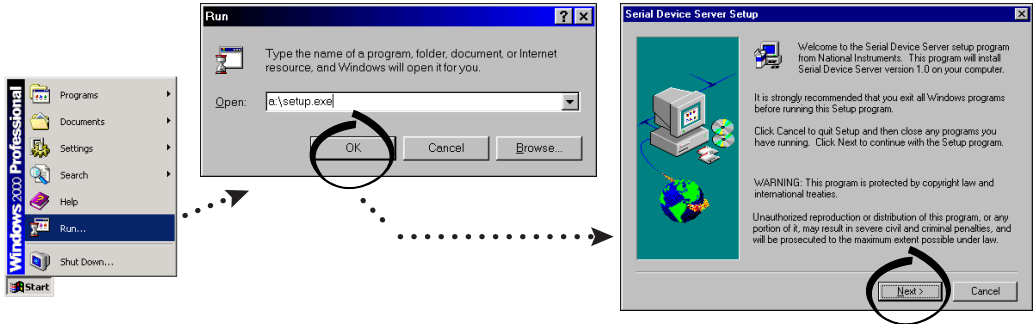


# GETTING STARTED

## Serial Device Server Installation for Windows 2000/NT 4.0

# 1

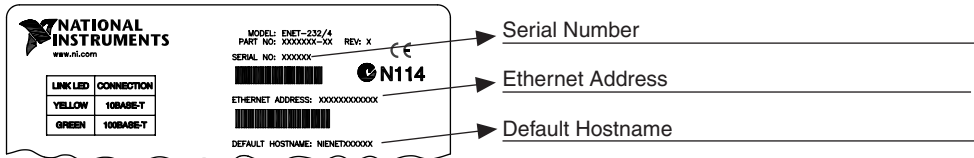
Log on as Administrator, insert disk 1, and run the NI Serial Server Software Setup program.



# 2

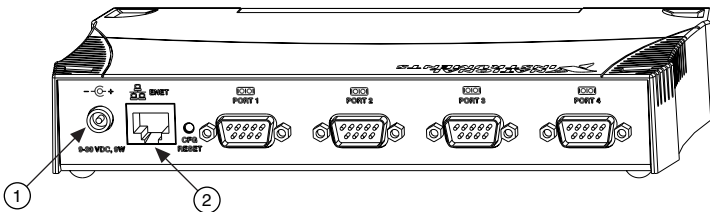
Record the following information from the baseplate label here:

This information helps identify this device on the network.



# 3

Connect power and Ethernet cables.

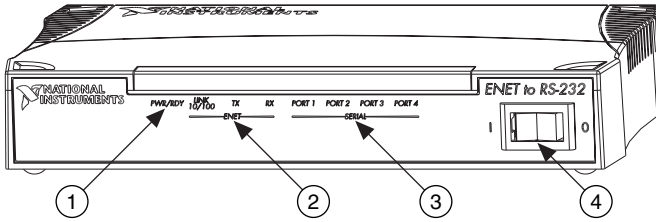


Key

- 1 Power Connection
- 2 Ethernet Connection

# 4

## Power on serial device server.



### Key

- 1 PWR/RDY LED
- 2 Ethernet LEDs
- 3 Serial Port LEDs
- 4 Power Switch

# 5

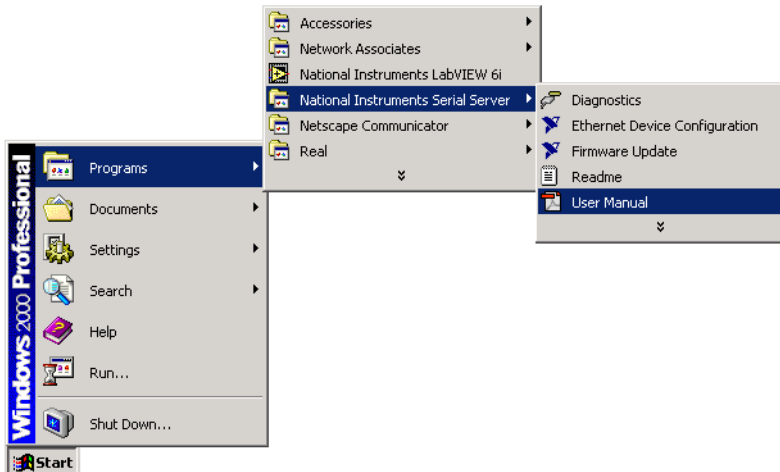
## Wait up to 90 seconds and observe PWR/RDY LED.

**Steady yellow**—Device was automatically configured. Go to Step 6.

**Steady red**—Contact National Instruments.

**Slow blinking pattern**—See Appendix B, *PWR/RDY LED Signaling*, in online user manual and contact National Instruments.

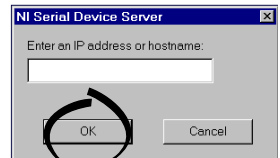
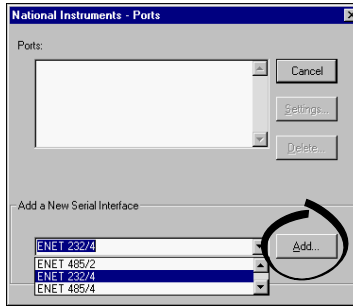
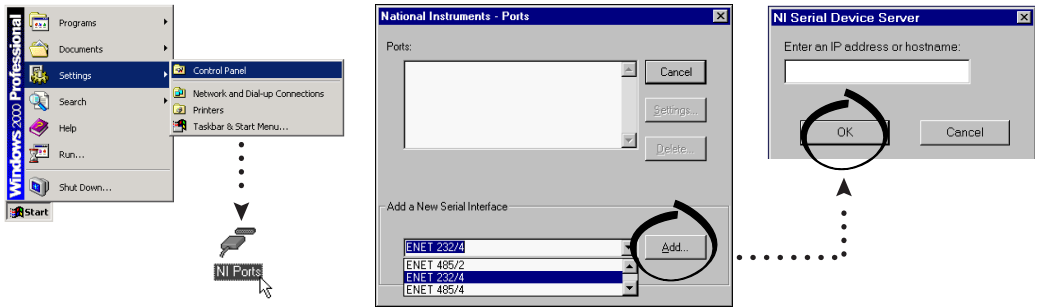
**Continues flickering rapidly**—See Chapter 3, *Ethernet Configuration*, in online user manual to manually configure your device.



# 6

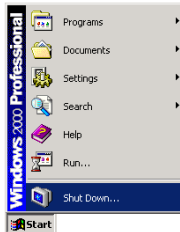
## Configure the NI Serial server software.

Open NI Ports utility and select your serial device server model from the pull-down. Enter the default hostname if your device was automatically configured. Otherwise, use the IP address assigned with the NI Ethernet Device Configuration utility.



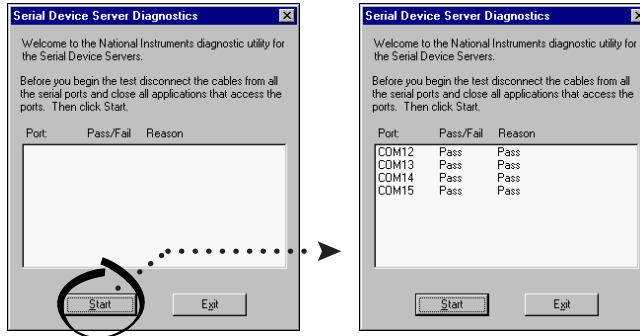
# 7

## Remove disk and restart computer.



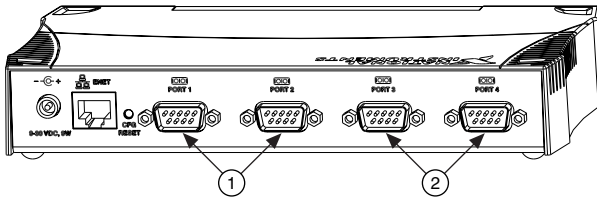
# 8

## Verify the installation.



# 9

## Connect serial devices to serial ports.



### Key

- 1 Serial Ports 1 and 2
- 2 Serial Ports 3 and 4  
(on 4-port models only)



[ni.com/support](http://ni.com/support)  
[ni.com/ask](http://ni.com/ask)

Tel: (512) 795-8248 • Fax: (512) 683-5678 • [ftp.ni.com](http://ftp.ni.com)

© Copyright 2000 National Instruments Corporation. All rights reserved. Product and company names mentioned herein are trademarks or trade names of their respective companies.



322990A-01

Dec00